

FY21 End-Year Fiscal Review



The Richland School of Academic Arts

June 2021

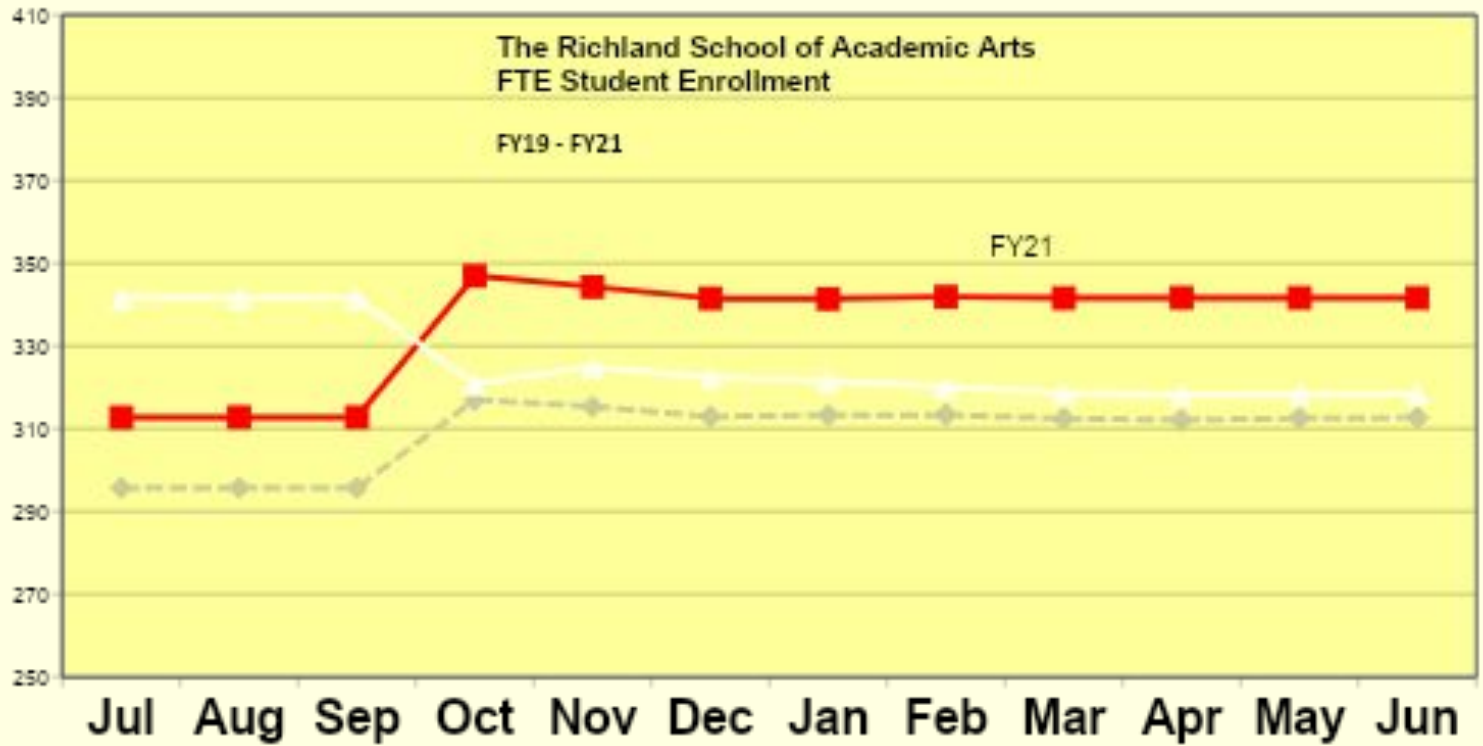


prepared by MANGEN & ASSOCIATES

People • Direction • Results

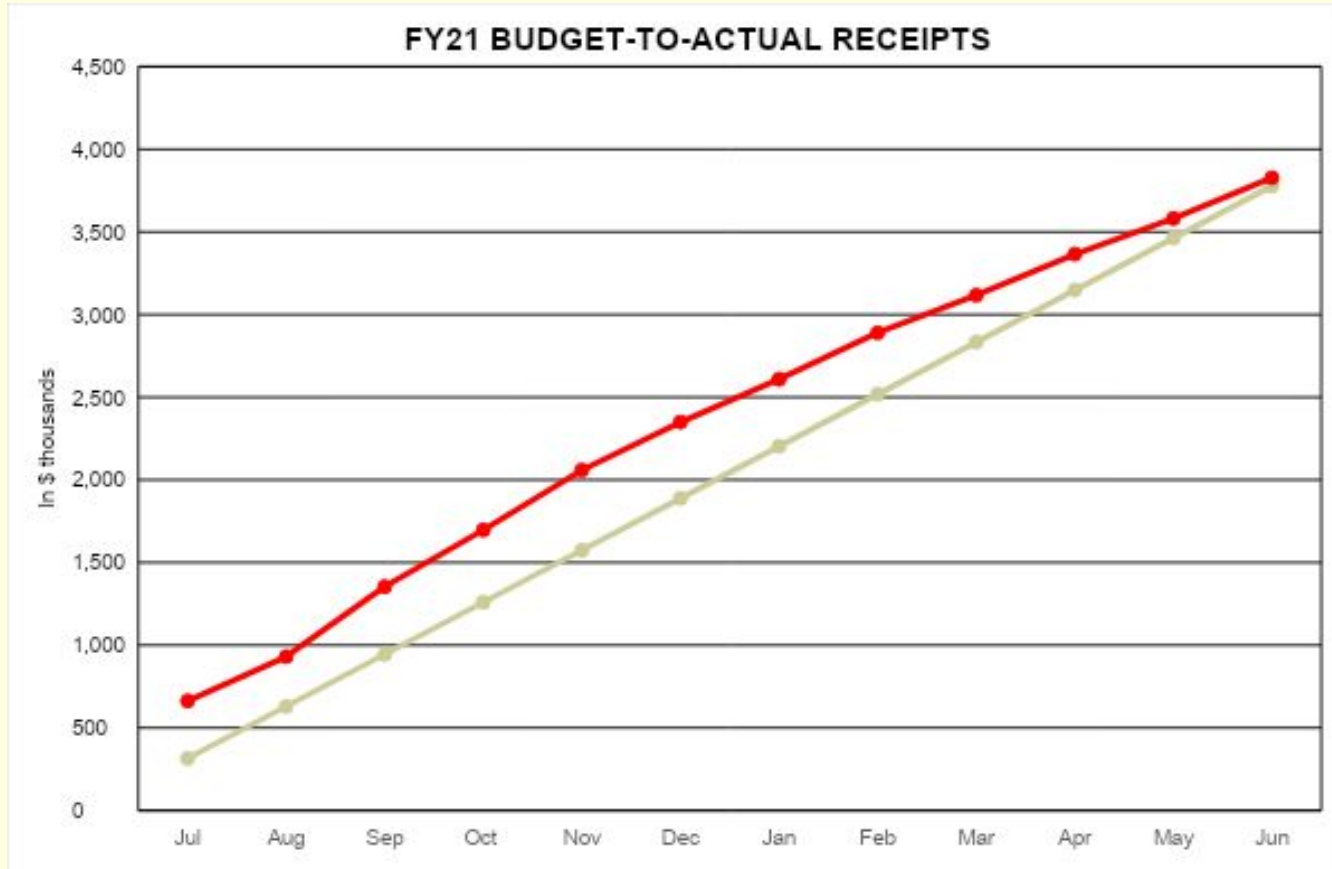
FY21 Full Time Equivalent (FTE) student enrollment decreased by ~23 FTE.

Financial Overview



Total Receipts for FY21 were \$49,451 higher than projected for the year.

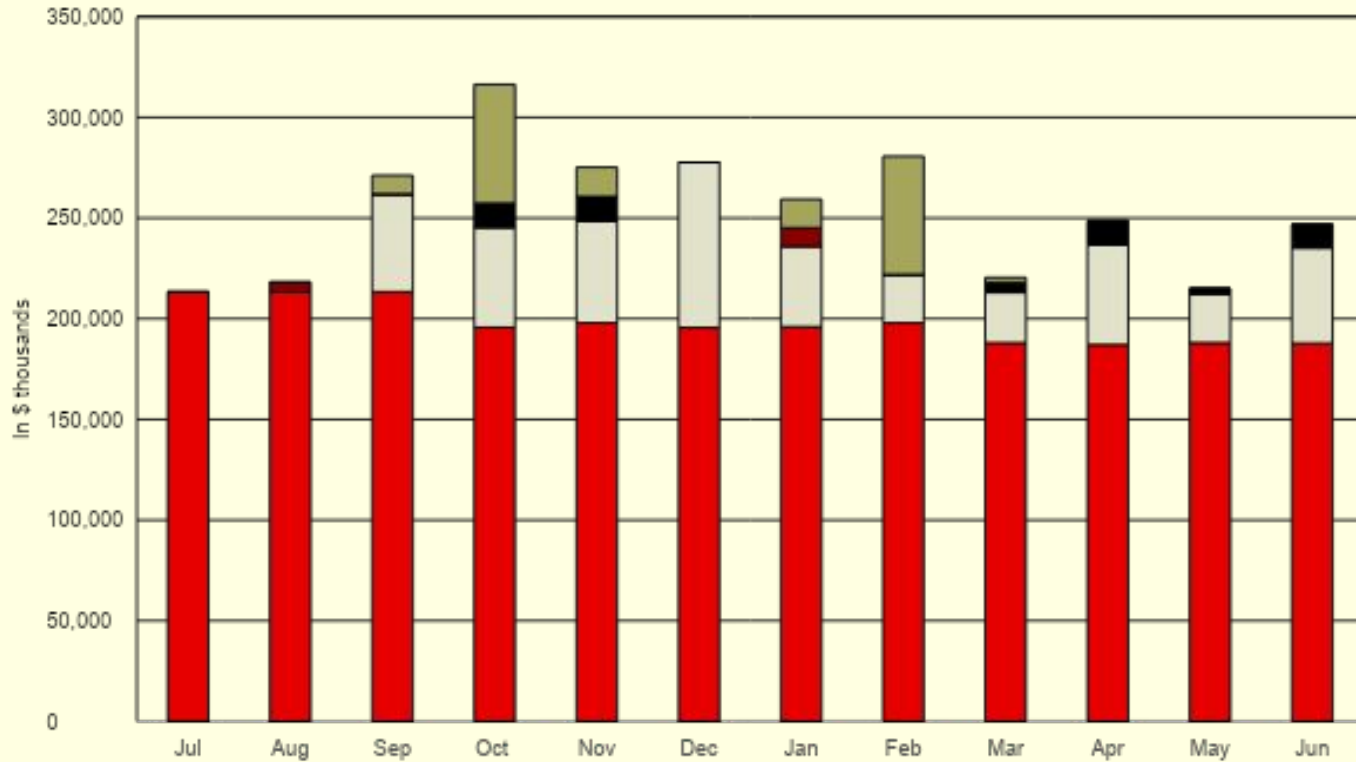
Financial Overview



Total receipts averaged \$253,570 per month.

Financial Overview

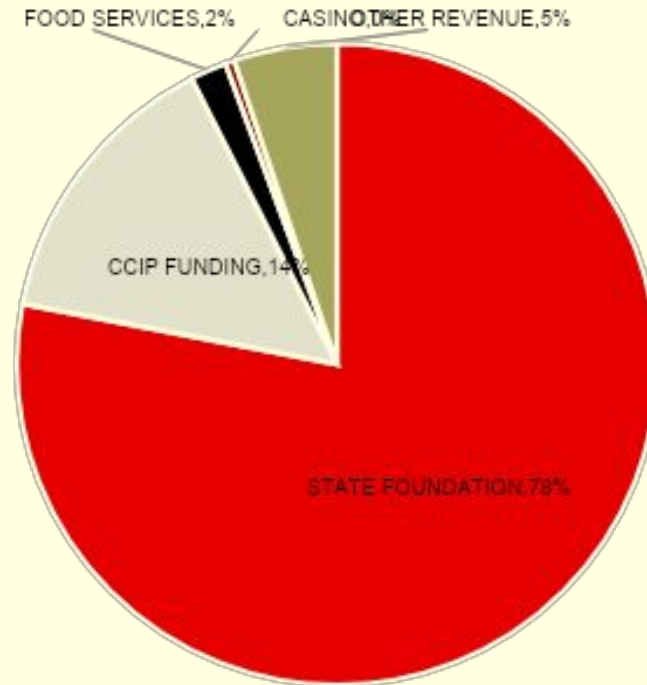
FY21 Receipts by Category



78% of Revenues for FY21 were derived from State Foundation payments.

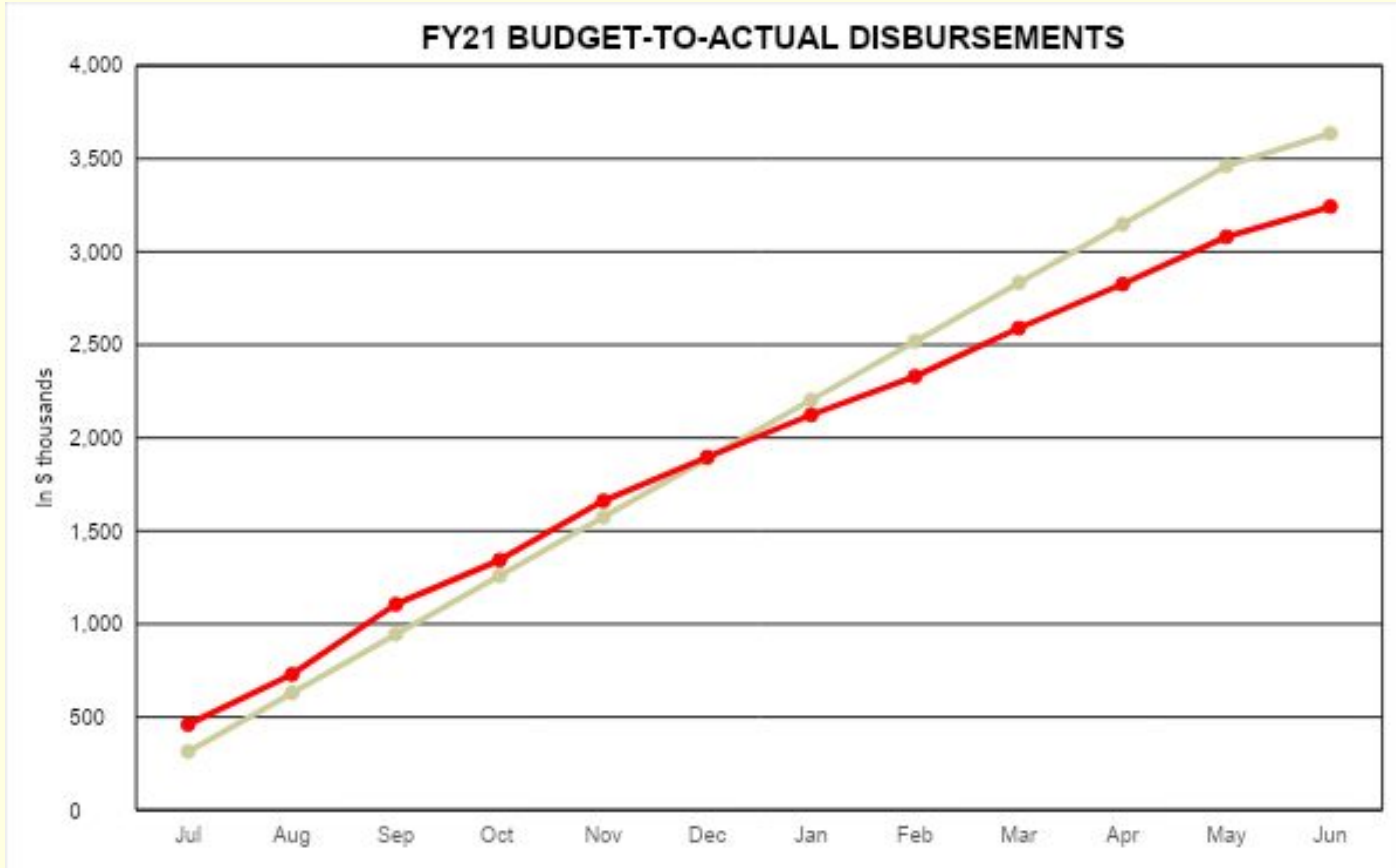
Financial Overview

FY21 Actual Receipts



FY21 total disbursements were \$393,225 lower than projected year-to-date.

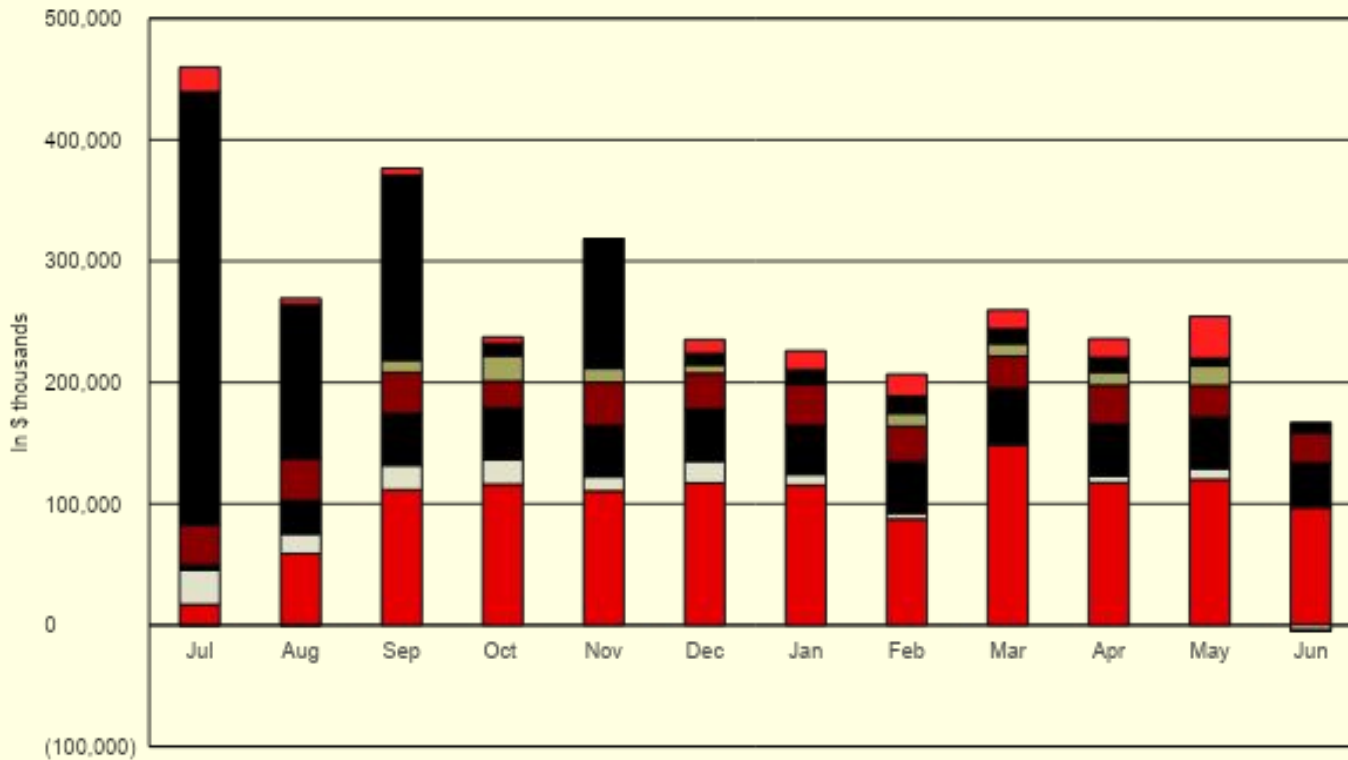
Financial Overview



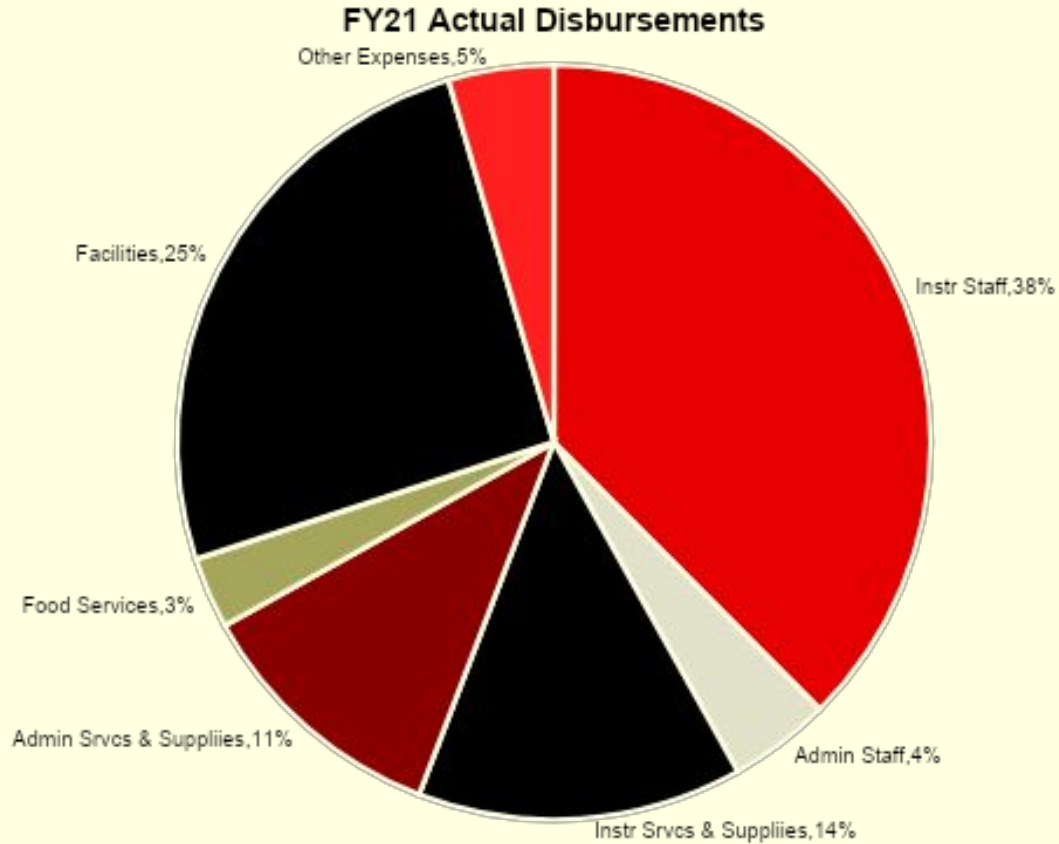
Total disbursements have averaged \$270,231 per month.

Financial Overview

FY21 Disbursements by Category

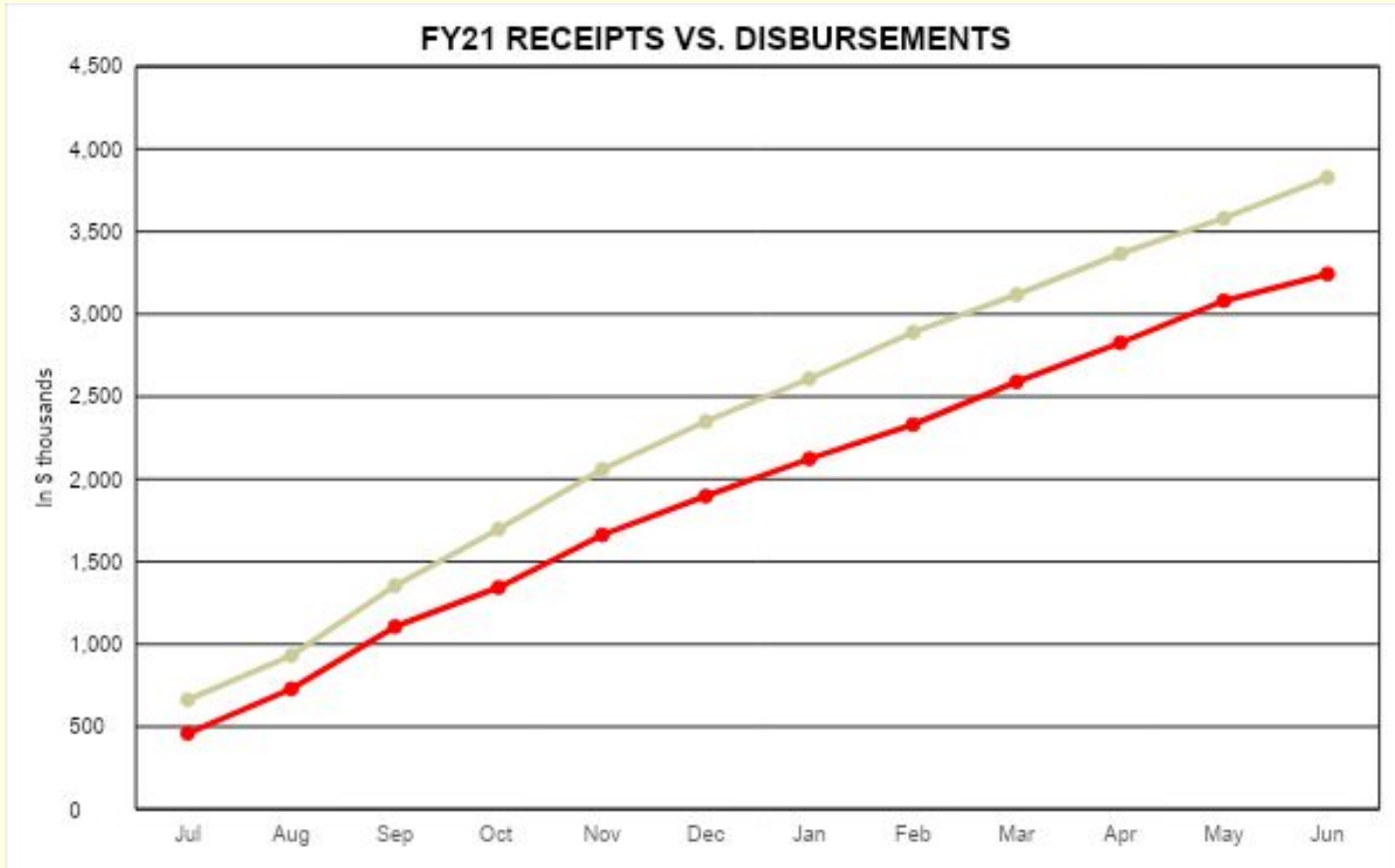


51% of FY21 disbursements were directed toward Instruction staff, services and supplies.



Year-to-date Receipts for FY21 were \$584,743 higher than Disbursements.

Financial Overview



Cash increased over FY21 as a result of Construction Debt Proceeds.

Financial Overview

FY21 Month End Cash Balances

